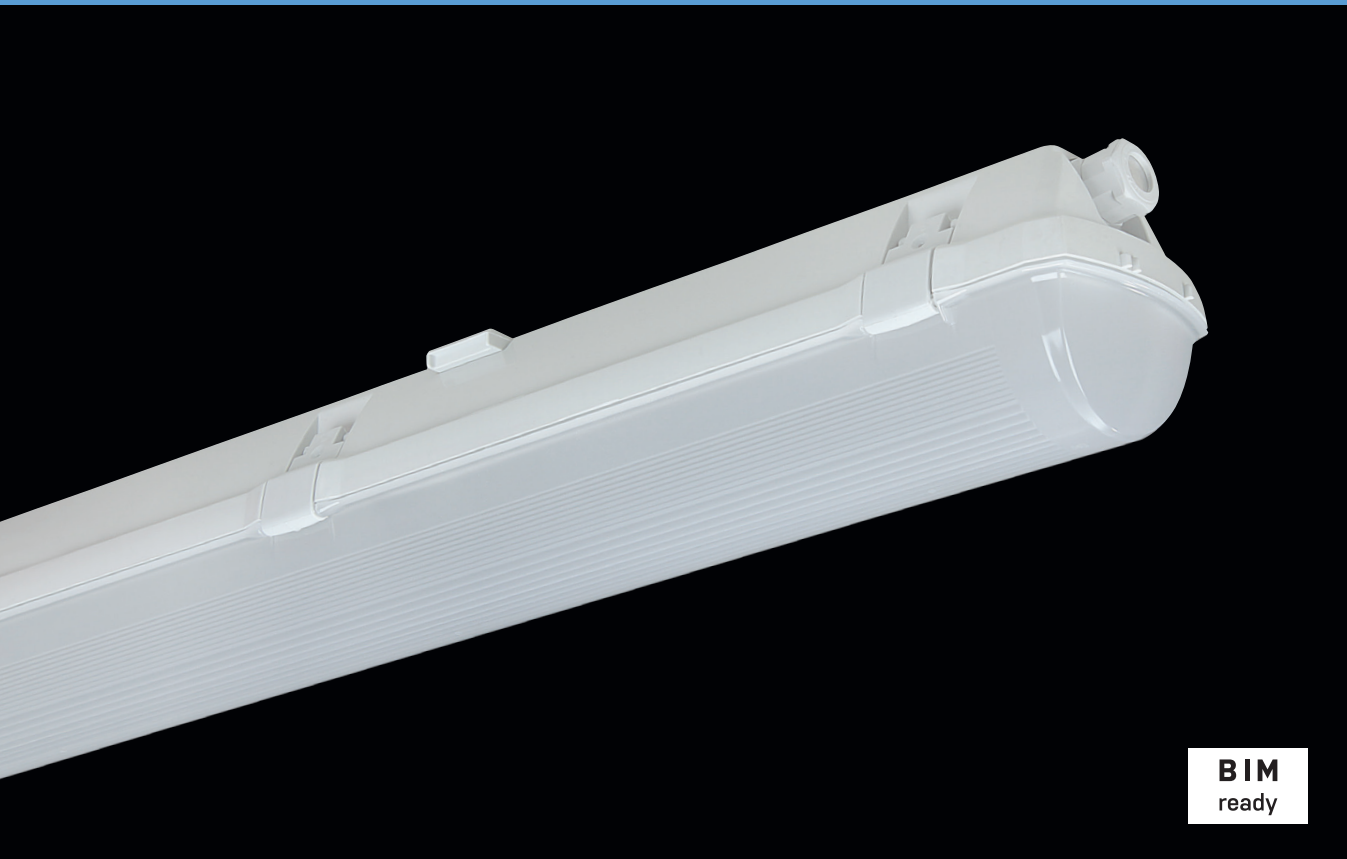


PRIMA LED



BIM
ready

... dustproof, waterproof and impact-resistant.

USE

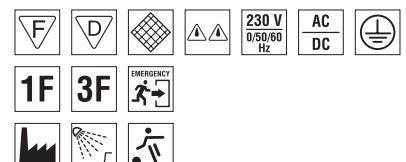
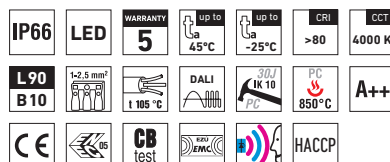
The light fitting is suitable for industrial indoor and outdoor roofed spaces, warehouses, sports areas, workshops, garages, transport terminals, utility structures and laboratories without a danger of explosion of gas, dust and combustible fumes.

The light fitting is resistant to dust, moisture and spouting water. The body and the diffuser made of polycarbonate (PC) have the increased resistance against deformation and impact.

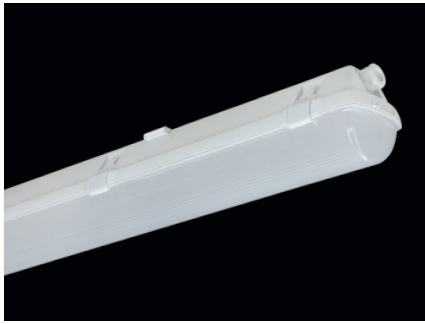
(It is necessary to consider exhalation in the air which can reduce the usability of the plastic at installations in an aggressive environment, see also page 193).

ADVANTAGES

- Light fitting protection **IP66**
- Maximum ambient temperature up to **t_a = 45 °C**
- Lifetime: 50,000 hours / L90B10
- Diffuser: translucent polycarbonate (PC) = high mechanical resistance
- Body: grey polycarbonate (PC) = high mechanical resistance
- Up to 45 % lower electricity consumption when compared to tubes T5
- In DALI version possibility of constant luminous flux for whole lifetime (CLO)
- Constant luminous flux even in ambient temperature of -25 °C
- Standard model - CRI > 80: 4000 K
- At request CRI > 80: 3000 K, 5000 K, 6500 K, CRI > 90: 3000 K, 4000 K
- It can be delivered in dimmable or emergency version
- Certification: ESĎ, ENEC, CB, HACCP



PRIMA LED PC, PCc



TECHNICAL DESCRIPTION

- Light fitting protection: IP66
- Maximum ambient temperature: $t_a = 45^\circ\text{C}$, Maximum ambient temperature: $t_a = 25^\circ\text{C}$ (version with emergency back-up source for 1 or 3 hours; M1h, M3h)
- Maximum system efficacy: 134 lm/W
- The watt and lumen values can vary by $\pm 7,5\%$
- Standard model - CRI > 80: 4000 K
- Lifetime: 50,000 hours / L90B10
- Diffuser: translucent polycarbonate (PC), UV stable, impact-resistant
- Body: grey polycarbonate (PC), UV stable, impact-resistant
- Reflector: steel sheet, white colour (RAL 9003)
- Clips: polyamide + 15 % glass fibre or stainless steel + polyamide
- Sealing: polyurethane (PUR), foamed body groove
- Cable glands: screwed PG 13.5, or rubber (SBS)
- Distance part: polyamide + 10 % glass fibre
- Terminal block: screwless, three-pole (basic version), or screwed
- Installation: package contains stainless hooks and stainless brackets
- Electric equipment: LED modules, current driver or current driver DALI

| Code | Type | Max. ambient temperature [°C] | Luminous flux of LED modules [lm] | Luminous flux of light fitting [lm] | Power consumption [W] | System efficacy [lm/W] | Net weight [kg] | A [mm] | D [mm] |
|---|-----------------------------|-------------------------------|-----------------------------------|-------------------------------------|-----------------------|------------------------|-----------------|--------|--------|
| For ambient temperature $t_a = 45^\circ\text{C}$ - body: grey polycarbonate - diffuser: translucent polycarbonate | | | | | | | | | |
| 65010 | PRIMA LED 1.2ft PC 1300/840 | 45 | 1300 | 1260 | 10 | 126 | 1,3 | 662 | 350 |
| 65020 | PRIMA LED 1.2ft PC 1600/840 | 45 | 1600 | 1510 | 12 | 126 | 1,2 | 662 | 350 |
| 65030 | PRIMA LED 1.2ft PC 2200/840 | 40 | 2200 | 1950 | 15 | 130 | 1,3 | 662 | 350 |
| 65040 | PRIMA LED 1.4ft PC 2600/840 | 45 | 2600 | 2320 | 18 | 129 | 1,9 | 1272 | 700 |
| 65050 | PRIMA LED 1.4ft PC 3200/840 | 45 | 3200 | 2860 | 22 | 130 | 1,7 | 1272 | 700 |
| 65060 | PRIMA LED 1.4ft PC 4400/840 | 40 | 4400 | 3920 | 30 | 131 | 1,9 | 1272 | 700 |
| 65460 | PRIMA LED 1.4ft PC 6400/840 | 40 | 6400 | 5650 | 43 | 131 | 1,9 | 1272 | 700 |
| 65070 | PRIMA LED 1.5ft PC 3250/840 | 45 | 3250 | 2810 | 22 | 128 | 2,3 | 1572 | 940 |
| 65080 | PRIMA LED 1.5ft PC 4000/840 | 45 | 4000 | 3530 | 27 | 131 | 2,2 | 1572 | 940 |
| 65090 | PRIMA LED 1.5ft PC 5500/840 | 40 | 5500 | 4940 | 37 | 134 | 2,3 | 1572 | 940 |
| 65490 | PRIMA LED 1.5ft PC 8000/840 | 40 | 8000 | 7090 | 54 | 131 | 2,3 | 1572 | 940 |

65020 PRIMA LED 1.2ft PC 1600/840 = suitable replacement for T8 fl. tube light fitting PRIMA 118 - 1x18W
 65050 PRIMA LED 1.4ft PC 3200/840 = suitable replacement for T8 fl. tube light fitting PRIMA 136 - 1x36W
 65460 PRIMA LED 1.4ft PC 6400/840 = suitable replacement for T8 fl. tube light fitting PRIMA 236 - 2x36W
 65080 PRIMA LED 1.5ft PC 4000/840 = suitable replacement for T8 fl. tube light fitting PRIMA 158 - 1x58W
 65490 PRIMA LED 1.5ft PC 8000/840 = suitable replacement for T8 fl. tube light fitting PRIMA 258 - 2x58W

PRIMA LED PC

Non-dimmable driver - plastic clips

| Code | Type | 1F | 3F | M1h | M3h | 3F M1h | 3F M3h |
|-------|-----------------------------|-------|-------|-------|-------|--------|--------|
| 65010 | PRIMA LED 1.2ft PC 1300/840 | x | x | x | x | x | x |
| 65020 | PRIMA LED 1.2ft PC 1600/840 | x | x | x | x | x | x |
| 65030 | PRIMA LED 1.2ft PC 2200/840 | x | x | x | x | x | x |
| 65040 | PRIMA LED 1.4ft PC 2600/840 | 65140 | 65340 | 65044 | 65045 | 65344 | 65345 |
| 65050 | PRIMA LED 1.4ft PC 3200/840 | 65150 | 65350 | 65054 | 65055 | 65354 | 65355 |
| 65060 | PRIMA LED 1.4ft PC 4400/840 | 65160 | 65360 | 65064 | 65065 | 65364 | 65365 |
| 65460 | PRIMA LED 1.4ft PC 6400/840 | 65461 | 65462 | x | x | x | x |
| 65070 | PRIMA LED 1.5ft PC 3250/840 | 65170 | 65370 | 65074 | 65075 | 65374 | 65375 |
| 65080 | PRIMA LED 1.5ft PC 4000/840 | 65180 | 65380 | 65084 | 65085 | 65384 | 65385 |
| 65090 | PRIMA LED 1.5ft PC 5500/840 | 65190 | 65390 | 65094 | 65095 | 65394 | 65395 |
| 65490 | PRIMA LED 1.5ft PC 8000/840 | 65491 | 65492 | x | x | x | x |

PRIMA LED PCc

Non-dimmable driver - stainless clips (c)

| Code | Type | 1F | 3F | M1h | M3h | 3F M1h | 3F M3h |
|-------|------------------------------|-------|-------|-------|-------|--------|--------|
| 65210 | PRIMA LED 1.2ft PCc 1300/840 | x | x | x | x | x | x |
| 65220 | PRIMA LED 1.2ft PCc 1600/840 | x | x | x | x | x | x |
| 65230 | PRIMA LED 1.2ft PCc 2200/840 | x | x | x | x | x | x |
| 65240 | PRIMA LED 1.4ft PCc 2600/840 | 65540 | 65640 | 65244 | 65245 | 65644 | 65645 |
| 65250 | PRIMA LED 1.4ft PCc 3200/840 | 65550 | 65650 | 65254 | 65255 | 65654 | 65655 |
| 65260 | PRIMA LED 1.4ft PCc 4400/840 | 65560 | 65660 | 65264 | 65265 | 65664 | 65665 |
| 65760 | PRIMA LED 1.4ft PCc 6400/840 | 65761 | 65762 | x | x | x | x |
| 65270 | PRIMA LED 1.5ft PCc 3250/840 | 65570 | 65670 | 65274 | 65275 | 65674 | 65675 |
| 65280 | PRIMA LED 1.5ft PCc 4000/840 | 65580 | 65680 | 65284 | 65285 | 65684 | 65685 |
| 65290 | PRIMA LED 1.5ft PCc 5500/840 | 65590 | 65690 | 65294 | 65295 | 65694 | 65695 |
| 65790 | PRIMA LED 1.5ft PCc 8000/840 | 65791 | 65792 | x | x | x | x |

Example of type marking: 65644 = PRIMA LED 1.4ft PCc 2600/840 **3F M1h**

PRIMA LED PC DALI

Digital dimmable driver DALI - plastic clips

| Code | Type | 1F | 3F | M1h | M3h | 3F M1h | 3F M3h |
|-------|----------------------------------|-------|-------|-------|-------|--------|--------|
| 65013 | PRIMA LED 1.2ft PC 1300/840 DALI | x | x | x | x | x | x |
| 65023 | PRIMA LED 1.2ft PC 1600/840 DALI | x | x | x | x | x | x |
| 65033 | PRIMA LED 1.2ft PC 2200/840 DALI | x | x | x | x | x | x |
| 65043 | PRIMA LED 1.4ft PC 2600/840 DALI | 65143 | 65343 | 65047 | 65048 | 65347 | 65348 |
| 65053 | PRIMA LED 1.4ft PC 3200/840 DALI | 65153 | 65353 | 65057 | 65058 | 65357 | 65358 |
| 65063 | PRIMA LED 1.4ft PC 4400/840 DALI | 65163 | 65363 | 65067 | 65068 | 65367 | 65368 |
| 65860 | PRIMA LED 1.4ft PC 6400/840 DALI | 65861 | 65862 | x | x | x | x |
| 65073 | PRIMA LED 1.5ft PC 3250/840 DALI | 65173 | 65373 | 65077 | 65078 | 65377 | 65378 |
| 65083 | PRIMA LED 1.5ft PC 4000/840 DALI | 65183 | 65383 | 65087 | 65088 | 65387 | 65388 |
| 65093 | PRIMA LED 1.5ft PC 5500/840 DALI | 65193 | 65393 | 65097 | 65098 | 65397 | 65398 |
| 65890 | PRIMA LED 1.5ft PC 8000/840 DALI | 65891 | 65892 | x | x | x | x |

PRIMA LED PCc DALI

Digital dimmable driver DALI - stainless clips (c)

| Code | Type | 1F | 3F | M1h | M3h | 3F M1h | 3F M3h |
|-------|-----------------------------------|-------|-------|-------|-------|--------|--------|
| 65213 | PRIMA LED 1.2ft PCc 1300/840 DALI | x | x | x | x | x | x |
| 65223 | PRIMA LED 1.2ft PCc 1600/840 DALI | x | x | x | x | x | x |
| 65233 | PRIMA LED 1.2ft PCc 2200/840 DALI | x | x | x | x | x | x |
| 65243 | PRIMA LED 1.4ft PCc 2600/840 DALI | 65543 | 65643 | 65247 | 65248 | 65647 | 65648 |
| 65253 | PRIMA LED 1.4ft PCc 3200/840 DALI | 65553 | 65653 | 65257 | 65258 | 65657 | 65658 |
| 65263 | PRIMA LED 1.4ft PCc 4400/840 DALI | 65563 | 65663 | 65267 | 65268 | 65667 | 65668 |
| 65960 | PRIMA LED 1.4ft PCc 6400/840 DALI | 65961 | 65962 | x | x | x | x |
| 65273 | PRIMA LED 1.5ft PCc 3250/840 DALI | 65573 | 65673 | 65277 | 65278 | 65677 | 65678 |
| 65283 | PRIMA LED 1.5ft PCc 4000/840 DALI | 65583 | 65683 | 65287 | 65288 | 65687 | 65688 |
| 65293 | PRIMA LED 1.5ft PCc 5500/840 DALI | 65593 | 65693 | 65297 | 65298 | 65697 | 65698 |
| 65990 | PRIMA LED 1.5ft PCc 8000/840 DALI | 65991 | 65992 | x | x | x | x |

Example of type marking: 65693 = PRIMA LED 1.5ft PCc 5500/840 DALI **3F**

LEGEND

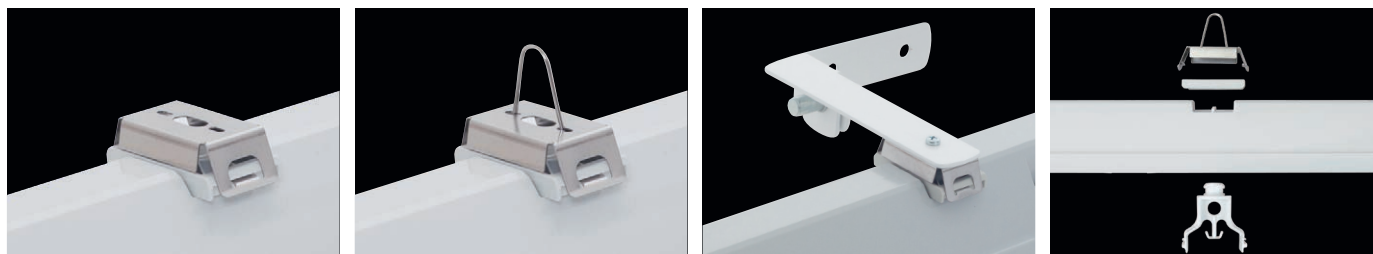
- DALI** – version with digital dimmable driver DALI
- 1F** – 1 phase wiring cables for through-wiring
- 3F** – 3 phase wiring cables for through-wiring

- M1h** – emergency back-up source with operating time of 1 hour [SA] for both permanent and emergency illumination
- M3h** – emergency back-up source with operating time of 3 hours [SA] for both permanent and emergency illumination

Batteries must be formatted before their putting into operation. Assembly instructions must be observed at installation.

LIGHT FITTING ATTACHMENT

- a) Directly to a ceiling or a wall with the use of screws and stainless brackets
- b) Suspension with the use of stainless hooks
- c) Attachment with the use of side hangers to the wall



LIGHT FITTING DETAILED VIEW

PRIMA LED

