

rayTEC®



SPARTAN LINEAR

MOUNTING & ACCESSORIES GUIDE

Retrofitting

This guide covers the different mounting options and accessories available with your SPARTAN Linear luminaire.

But did you know that you might be able to save cost by using existing bracketry?

SPARTAN Linear is designed with the same fixing centres as traditional fluorescent luminaires, and comes with both M6 and M8 tapped mounting holes as standard. So, if you're using SPARTAN as a direct replacement, you may be able to use the bracketry from the existing installation. Linear is also designed with the same dimensions and cable entries as traditional fluorescent's, so you could even use the existing cable and glands.

SPARTAN WL84 Linear

(2x18W replacement)



1 x M8 tapped hole
2 x M6 tapped holes

SPARTAN WL168 Linear

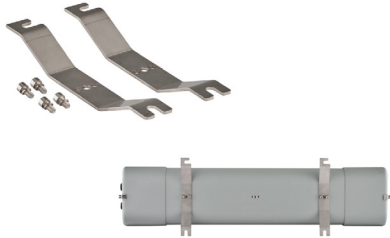
(2x36W replacement)



1 x M8 tapped hole
2 x M6 tapped holes

Primary Mounting Solutions

For new installations, or where new brackets are needed, a range of dedicated bracket solutions are available to suit multiple floor, ceiling and pole mount configurations, along with bespoke lens options and protective kits.



Ceiling Mount Bracket Kit

SPX-BKT-CM

The SPARTAN Ceiling Mount Kit is designed to mount to any flat service, both ceiling and wall. Provided in a pair, two low-profile stainless-steel U brackets screw easily to the back of the Linear unit, then onto the chosen surface.



Swivel Mount Bracket Kit

SPX-BKT-SW

SPX-BKT-SWS (short)

The SPARTAN Swivel Bracket Mounting Kit is designed for ceiling and wall mounting of all SPARTAN Linear luminaires. There is the facility to rotate the fitting through various angles to suit any application. The stainless-steel bracket provides lock-in holes every 30° and 45°. Shorter length variants are available providing part-rotation for restricted space applications.



Pole Clamp Kit

SPX-BKT-PC28 (28mm)

SPX-BKT-PC33 (33mm)

SPX-BKT-PC42 (42mm)

SPX-BKT-PC48 (48mm)

SPX-BKT-PC60 (60mm)

The SPARTAN Pole Clamp Kit is designed to pole-mount any SPARTAN Linear unit. The stainless-steel circular brackets are provided in a pair and easily screw to the back of the Linear unit, with adjustable side-bolts to open and clamp around a single pole. Kits to suit poles up to 62mm in diameter are available.

Primary Mounting Solutions



Magnetic Mount Kit

SPX-BKT-MAG

The SPARTAN Magnetic Mounting Kit provides two magnetic discs which easily screw to the back of any Linear fitting. They conveniently and securely attach the fitting to any flat metal surface.



M8 Eye Bolt Kit

SPX-BKT-EYE

The SPARTAN M8 Eye Bolt Kit is supplied in a pair. Two stainless steel circular eye bolts screw easily into the back of each luminaire, providing two dedicated suspension points.

Can't find what you need?

We pride ourselves on flexibility and being able to meet the many demands of our customers. If you have a special requirement, and can't see a solution which is suitable, give us a call and chat to one of our experts to discuss how we can help.

Other Accessories



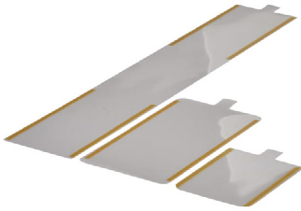
Suspension Cord

SPX-BKT-SCL500 (500mm)

SPX-BKT-SCL1000 (1000mm)

SPX-BKT-SCL1500 (1500mm)

The SPARTAN Suspension Cord Kit is a stainless-steel cord and carabineer, which attaches to a retention bracket which can be easily screwed into the back of the luminaire. This provides an additional safety tether for height-critical applications. The kit is available in 500mm, 1000mm and 1500mm variants.



Protective Film

SPX-BKT-PF84

SPARTAN Protective Film comes in a pack of 10. The film adheres to the luminaire's front lens and provides protection in applications where there is a risk of paint overspray, or high levels of dirt and dust.



Anti-static Polycarbonate Lens

SPX-BKT-DL (diffused)

SPX-BKT-DDL (double diffused)

SPX-BKT-RL (clear)

While the SPARTAN Anti-static Polycarbonate Lens comes pre-fitted as standard, additional lenses can also be purchased separately. The lens is available as a clear replacement for the standard luminaire, while diffused and double diffused options can be used to soften light output.



Hazardous Area LED Lighting with Worldwide Certification

Global HQ

T: +44 (0) 1670 520055
F: +44 (0) 1670 819760
hazsales@raytecled.com

Americas

T: +1 613 270 9990
T: +1 888 505 8335 (Toll Free)
ussales@raytecled.com

www.raytecled.com